

梅捷显卡  
使用手册

SOYO GRAPHICS CARD  
USER MANUAL

## 声明

### 版权声明：

本手册版权归梅捷科技所有。梅捷科技有权在不知会用户的前提下增益、删除内容。本手册为纯技术文档，无任何暗示及映射第三方内容。本手册不承担因印刷及排版错误而导致的任何歧义。本手册中所涉及之任何第三方之注册商标，所有权归其制造商或品牌供应商所有。

Copyright© 1999-2020 版权所有、未经授权，禁止以任何方式复制传播。

### 关于本手册：

本手册适合初学者。包含 NVIDIA/AMD 产品特性介绍、硬件安装及驱动程序安装介绍。以及一些名词的解释，同时也可以作为技术性参考资料。

### FCC 条款：

本装置完全遵循 FCC 条款第 15 部分的规定。本装置符合以下两个条件：

1. 本装置不会造成有害干扰；
2. 本装置可承受任何外来干扰，包括可能导致非预期操作的干扰。

注意：依照 FCC 条款第 15 部分的规定，本装置已经通过测试并且符合 B 类数码设备（依照 FCC 规则第 15 部分规范）的限制。这些限制旨在为安装过程中可能造成的有害射频干扰提供合理的防护。本装置使用时会产生并发射射频能量，如果没有按照制造商的指示安装和使用，可能会与无线电通讯造成有害干扰。但是，即使在特定的条件下安装，不保证不会产生任何干扰。如果本装置真的与无线电通讯造成冲突（可通过打开和关闭本装置来确定），那么建议用户采取以下一种或多种措施来消除干扰：

- 重新安装或调整接收天线；
- 增加装置与接收器之间的距离；
- 将装置与接收器插在不同电路的插座上；
- 如果有需要，使用者可以与经销商或有经验的无线电技术工程师联系以寻求帮助；

### 警告：

为了确保本装置遵照上述规定，请务必确保本装置外观完好。

未经明确同意，使用者不可对本装置做任何改变或修改。

### CSC 条款：

根据加拿大通讯部所制定的无线电干扰条例(Radio Interference Regulation)，本装置发射的射频能量符合 Class B 的限制。

梅捷科技版权所有。

---

## Statement

### **Copyright Notice:**

The copyright of this manual belongs to SOYO. SOYO has the right to add and delete content without telling the users. This manual is a pure technical document without any hint or mapping of third-party content. This manual does not bear any ambiguity caused by printing and typographical errors. The registered trademarks of any third parties involved in this manual belong to their manufacturers or brand suppliers.

Copyright (c) 2003 - 2020 SOYO CO.,Ltd., ALL Rights Reserved. Unauthorized, reproduction in any way is prohibited.

### **About this manual:**

This manual is suitable for beginners. Including NVIDIA/AMD product feature introduction, hardware installation and driver software installation introduction. And the explanation of some terms can also be used as technical reference materials.

### **FCC terms:**

For a Class B digital device or peripheral, the instructions furnished the user shall include the following or similar statement, placed in a prominent location in the text of the manual:

Note: This equipment has been tested and found to comply with the limits for a Class B digital device, pursuant to part 15 of the FCC Rules. These limits are designed to provide reasonable protection against harmful interference in a residential installation. This equipment generates, uses and can radiate radio frequency energy and, if not installed and used in accordance with the instructions, may cause harmful interference to radio communications. However, there is no guarantee that interference will not occur in a particular installation. If this equipment does cause harmful interference to radio or television reception, which can be determined by turning the equipment off and on, the user is encouraged to try to correct the interference by one or more of the following measures:

- Reorient or relocate the receiving antenna.
- Increase the separation between the equipment and receiver.
- Connect the equipment into an outlet on a circuit different from that to which the receiver is connected.
- Consult the dealer or an experienced radio / TV technician for help.

**WARNING:**

In order to ensure that this device complies with the above regulations, please make sure that the appearance of this device is intact.

Without explicit consent, users cannot make any changes or modifications to this device.

**CSC terms:**

According to the Radio Interference Regulation established by the Canadian Department of Communications, this equipment has been comply with the limits for a Class B digital device.

Copyright (c) 2003 - 2020 SOYO CO.,Ltd., ALL Rights Reserved

## 目录

1. 简介 .....	7
1.1. 前言 .....	7
1.2. 产品包装 .....	7
1.3. 驱动程序 .....	7
1.4. 显卡系统需求 .....	7
2. 显卡安装 .....	8
2.1. 卸载现有显卡 .....	8
2.2. 安装显卡 .....	8
3. 驱动程序安装 .....	10
3.1. 梅捷官方显卡驱动下载 .....	10
3.2. NVIDIA 官网显卡驱动下载 .....	10
3.3. NVIDIA 显卡驱动安装 .....	11
3.4. AMD 官网显卡驱动下载 .....	12
3.5. AMD 显卡驱动安装 .....	13
4. 显示设置 .....	14
4.1. 系统显示设置调节 .....	14
4.2. NVIDIA 驱动程序界面说明 .....	15
4.3. AMD 驱动程序界面说明 .....	16

---

## MENU

1. Introduction .....	18
1.1. Foreword .....	18
1.2. Product packaging.....	18
1.3. Driver .....	18
1.4. Graphics system requirements .....	18
2. Graphics card installation .....	20
2.1. Uninstall existing graphics card .....	20
2.2. Installing the graphics card .....	21
3. Driver installation .....	23
3.1. SOYO official graphics driver download.....	23
3.2. NVIDIA official website graphics card driver download .....	23
3.3. NVIDIA graphics card driver installation.....	24
3.4. AMD official website graphics card driver download .....	25
3.5. AMD graphics card driver installation.....	26
4. Display settings.....	28
4.1. System display setting adjustment .....	28
4.2. NVIDIA driver interface description .....	29
4.3. AMD driver interface description .....	31

# 1. 简介

## 1.1. 前言

感谢您使用梅捷显卡，您所选购的梅捷显卡是由 NVIDIA™/AMD 高效能 3D 处理器芯片所制成。该显示卡兼具了高质量的视频播放，高品质的 3D 渲染质量，并提供了更好的显示及 3D 处理效果。此显卡使用了优质散热片及强力风扇，它能降低显卡在高速运算时产生的热量，从而确保显卡在常温下工作，以提高系统的稳定性。本显卡适合于多媒体应用、3D 游戏和专业设计，为主流 PC 带来高性能的 3D 效果。为台式电脑用户以及专业使用者提供了更好的解决方案，是一款全方位超高品质的 2D/3D 显示卡。

## 1.2. 产品包装

当您拿到一套完整的梅捷显卡，包装盒内应有以下的配件：

- 梅捷显卡一片
- 快速安装手册一本（部分型号）
- 质保卡一张
- 其它

## 1.3. 驱动程序

请从梅捷官网、NVIDIA 官网或 AMD 官网获取最新驱动程序，以网站信息为准。

## 1.4. 显卡系统需求

- 处理器：Pentium 4, Celeron, AMD Athlon/Sempron 或以上兼容处理器
- 主板：PCI-E 接口显卡要求具备 PCI-Express x16 图形接口主板
- 内存：DDR2/DDR3/DDR4 内存（2GB 或以上）
- 显示器：17 英寸或以上显示器
- 操作系统：Windows 7/10 64 位系统（部分型号显卡只支持 windows 10 1809 以上版本）
- 附加程序：.NET4.5、Adobe Reader 等

## 2. 显卡安装

### 警告：

此显卡由许多精密的集成电路及其它元件所构成，这些集成电路很容易因为遭到静电的影响而损坏。所以请在安装前，做好如下准备：

1. 请将计算机的电源关闭，并且拔除电源插头。
2. 请确保机箱有足够的位置安装您的显卡。
3. 拿取显卡时请尽量避免接触金属接线部份，最好能够戴上防静电手套。



PCI-Express x16 接口显卡（显卡图片仅供参考，具体显卡外观以实物为准）

### 注意事项：

1. 若安装时没有防静电手套，请先将手触摸一下导电物以释放身体中的静电，确保安装时您的身体不带静电。
2. 不要让您身体的其它部位碰伤显卡组件。
3. 使用时若发现显卡有明显损坏，请勿接通电源。

### 2.1. 卸载现有显卡

如果您安装的是一台新机器，可以跳过这一步。

如果您安装的是旧机器，且旧机器已经安装了一块独立显卡，那么在安装新的显卡之前，必须卸载现有的驱动程序。

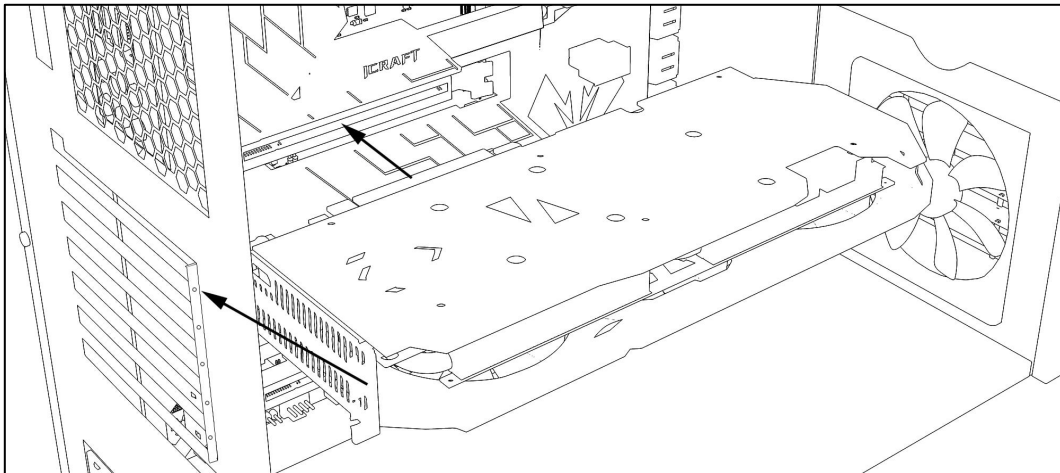
1. 在 Windows 操作系统中，右键“开始”按钮，选择“设备管理器”。在“显示适配器”一栏中选择您现有的显卡驱动程序，然后选择“卸载设备”。
2. 关闭计算机并断开电源，打开计算机外壳，取出现有的图形显卡。

### 2.2. 安装显卡

1. 打开主机外壳。



2. 从包装中取出显卡
3. 将显卡插入主板的 PCI-Express x16 插槽中。步骤如下：
  - a) 找到即将使用的 PCI-Express x16 插槽，并根据插槽位置移除与显卡金属挡板同等数量的机箱自带扩展槽位挡板（如已被移除，则忽略该步骤）；
  - b) 将显卡对准 PCI-Express x16 插槽并小心插入；
  - c) 将显卡金属挡板与机箱扩展槽用螺丝固定。

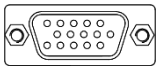
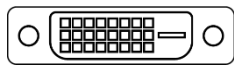
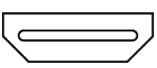
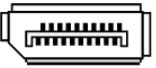
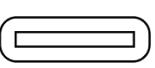


显卡安装示意图（示意图仅供参考，具体操作以实际情况为准）

\*请务必确保显卡的 PCI-E 接口与主板的 PCI-Express x16 插槽紧密接触在一起。

4. 若显卡存在 6pin/8pin 外接电源接口，则需将计算机电源中对应的 6pin/8pin 供电线插在显卡的外接电源接口上。（若显卡存在多个外接电源接口，则需全部接上）
5. 将您机器的外壳重新装上、锁好螺丝、并将支持 VGA/DVI/HDMI/DP/Type-C 接口传输的显示设备通过 VGA/DVI/HDMI/DP/Type-C 传输线连接至显卡的对应接口（显卡及显示设备需有对应接口，接口说明请看下图）。
6. 将其它设备正确连接至计算机（恢复原状）。
7. 接通电源并启动计算机。

#### 显卡输出接口说明：

				
VGA	DVI	HDMI	DP	Type-C

常见显卡接口

## 3. 驱动软件安装

### 3.1. 梅捷官方显卡驱动下载

1. 打开网页浏览器访问 <http://www.soyocn.net/>。
2. 点击“下载中心”——“显卡驱动”。



3. 根据显卡类型选择显卡驱动选择 NVIDIA 系列或 AMD 系列。
4. 根据显卡型号点击进入显卡下载界面（若未找到您所购买的显卡型号，可选择 NVIDIA GeForce Experience 软件进行下载）。
5. 根据电脑系统选择对应驱动点击“DOWN 即可下载，等待下载完成后进行安装。

### 3.2. NVIDIA 官网显卡驱动下载

1. 打开浏览器访问 <https://www.nvidia.cn/>。
2. 点击“驱动程序”，选择“GeForce 驱动程序”（推荐）或“所有 NVIDIA 驱动程序”进入驱动下载页面。（以下教程以选择“GeForce 驱动程序”为例）



3. 跳转后，在“手动搜索驱动程序”处，根据您选购的显卡系列、型号，以及您当前电脑的系统，您想要安装的语言进行选择。

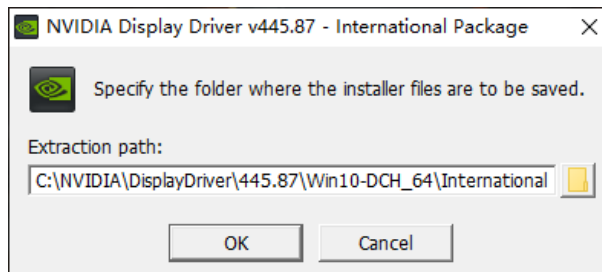


4. 确认型号正确以后点击“开始搜索”。

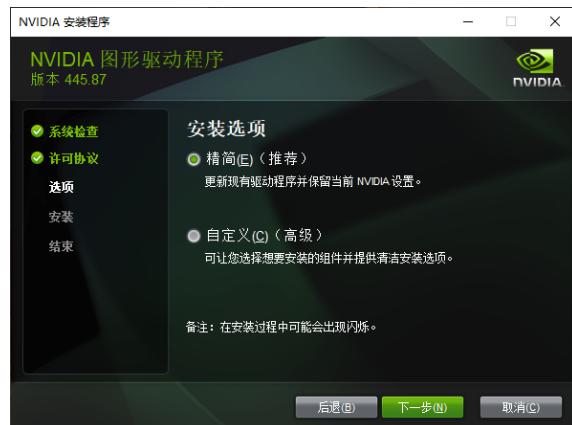
5. 单击最新版本的显卡驱动进行下载，等待下载完成后进行安装。

### 3.3. NVIDIA 显卡驱动安装

1. 驱动下载完成后打开驱动安装程序，当出现 NVIDIA 驱动解压界面时，单击 OK 按钮，待解压完毕，将会自动弹出驱动安装界面。



2. 当出现 NVIDIA 软件许可协议窗口时，点击“同意并继续”，会出现以下安装选项，可以选择“精简（推荐）”安装或“自定义（高级）”安装，建议选择“精简（推荐）”安装方式然后点击“下一步”进行驱动安装。

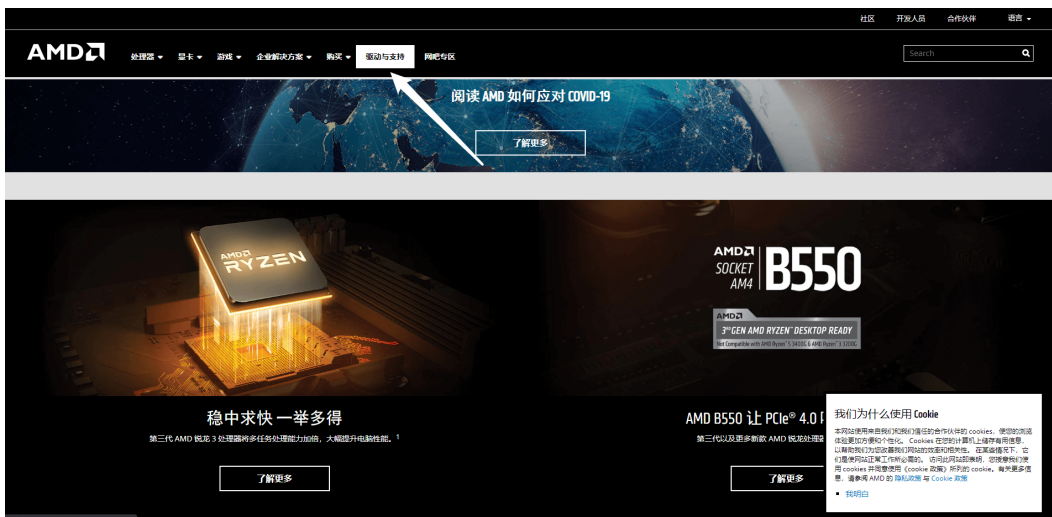


3. 当驱动安装结束后，安装程序会出现以下界面，点击“关闭”退出驱动安装程序。建议在驱动安装完毕后，重启系统以获得最佳体验。



### 3.4. AMD 官网显卡驱动下载

1. 打开浏览器访问 <https://www.amd.com/zh-hans/>。
2. 点击“驱动与支持”。



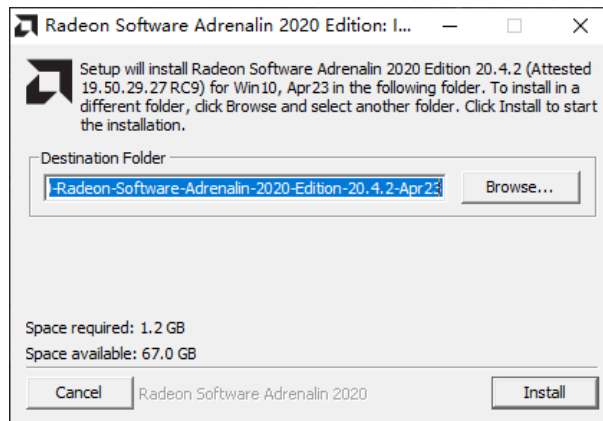
3. 跳转后，在 搜索您的产品 处，根据您选购的显卡型号进行搜索选择，或在“列表中选中您的产品”处根据您选购的显卡系列、型号进行选择，选择完毕后，点击“提交”进入显卡驱动下载页面。



4. 选择您当前的操作系统，点击“下载”进行下载，等待下载完成后进行安装。

### 3.5. AMD 显卡驱动安装

1. 驱动下载完成后打开驱动安装程序，点击“Install”开始安装。



2. 当出现 AMD Radeon Software 安装程序安装界面时，单击 安装 按钮，等待安装完毕后，点击“完成”即可。



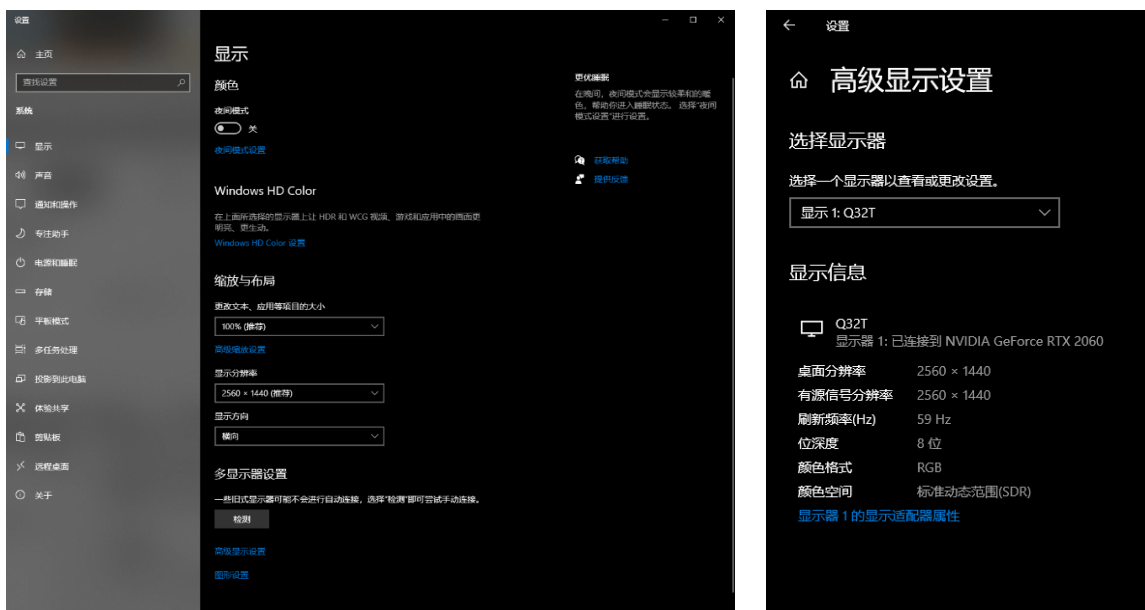
3. 当驱动安装结束后，系统有可能会弹出提示建议重启系统，推荐在驱动安装结束后，重启系统以获得最佳体验。

## 4. 显示设置

注：以下显卡属性设置以梅捷 NVIDIA RTX 2060/AMD RX580 在 Windows 10 下为例说明，其他系统方法类似，本说明不作详解。

### 4.1. 系统显示设置调节

1. 显卡驱动安装完毕后，您可以右击桌面空白处选择“显示设置”打开系统显示设置界面。在此界面中可以查看当前使用的显示分辨率以及显示方向。您可以在此界面更改显示分辨率、显示方向等内容。点击界面下方的“高级显示设置”就能打开高级显示设置，将会看到当前显示设备的信息。

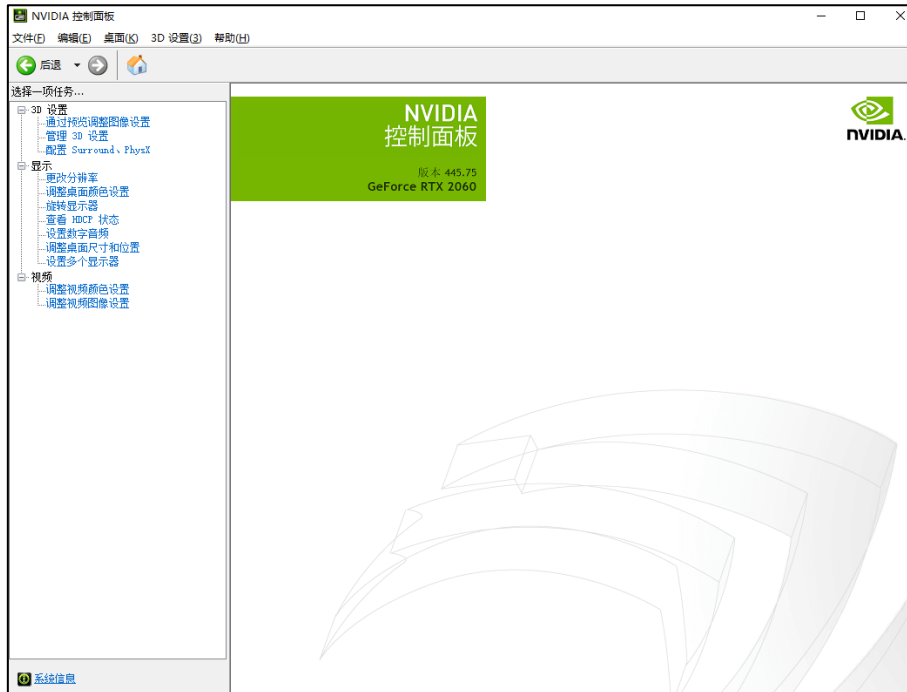


2. 点击“显示器 1 的显示适配器属性”进入显示设备属性界面（若有多个显示器，则以实际为准）。在显示设备属性界面可以查看并更改“屏幕刷新频率”。



## 4.2. NVIDIA 驱动程序界面说明

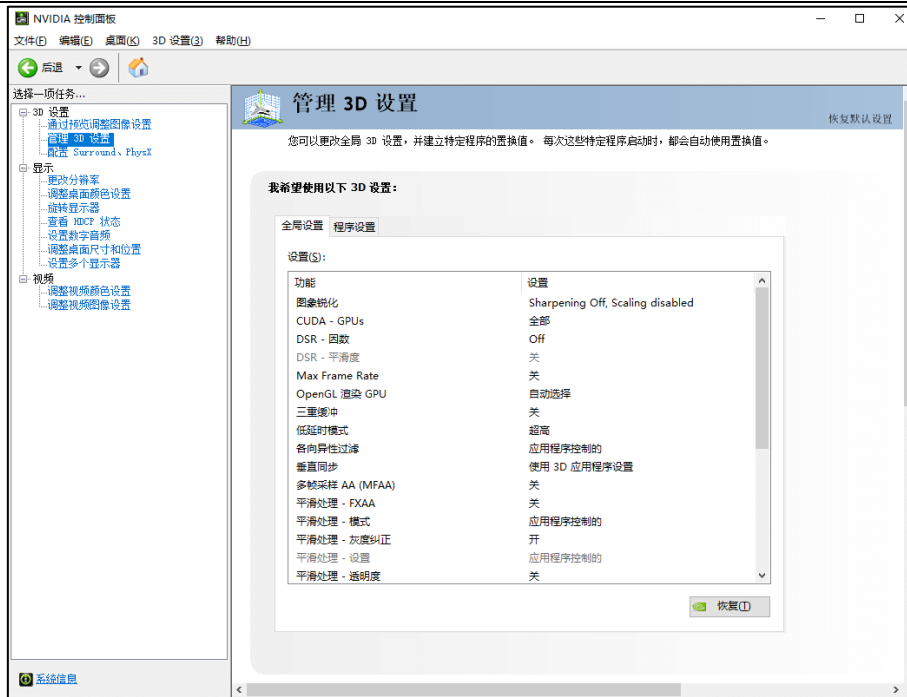
1. 当您的 NVIDIA 显卡安装完驱动程序后，您可以右键桌面空白处，点击“NVIDIA 控制面板”打开 NVIDIA 控制面板界面。



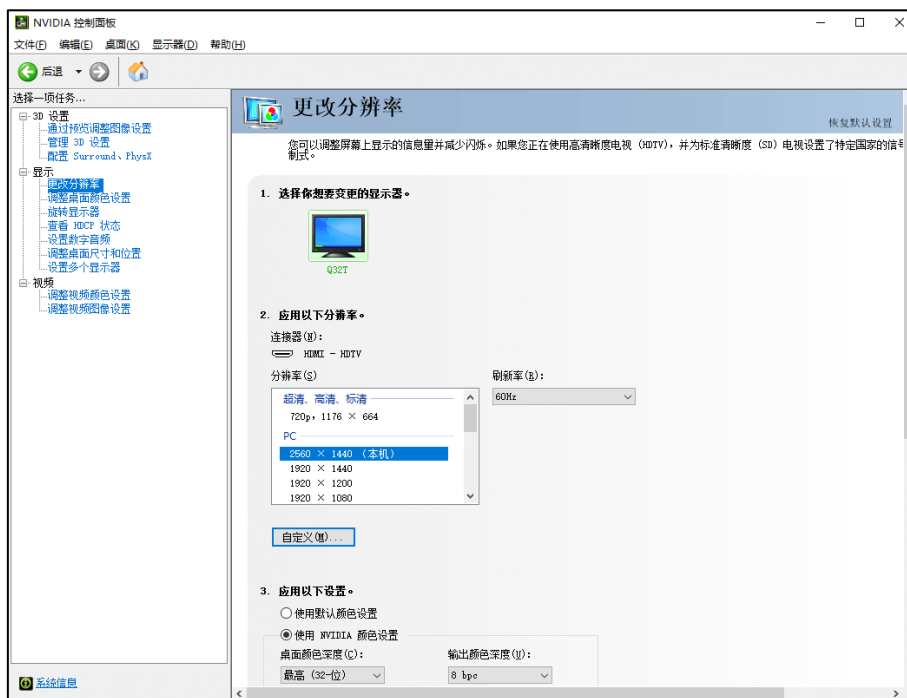
2. 点击 NVIDIA 控制面板左下角的“系统信息”，可以查看当前显卡的相关信息。



3. 点击 NVIDIA 控制面板左侧的“管理 3D 设置”，打开程序 3D 设置界面，该页面可以进行全局 3D 设置或按程序单独 3D 设置。



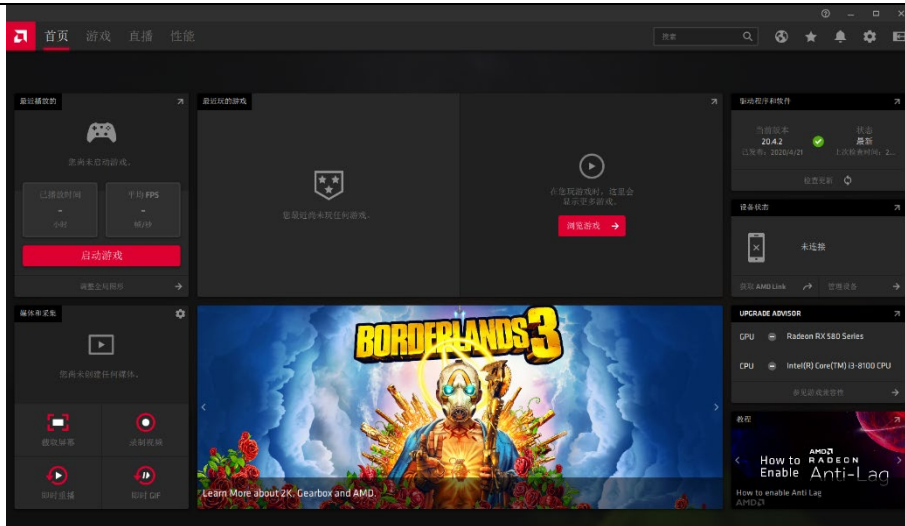
4. 点击 NVIDIA 控制面板右侧的“更改分辨率”，打开显示器分辨率设置界面，该界面可以进行分辨率、刷新率的更改。



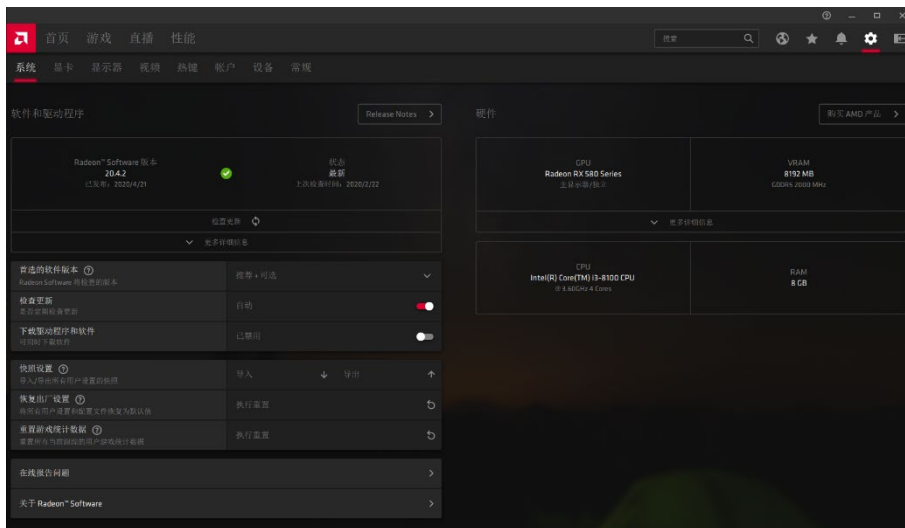
### 4.3. AMD 驱动程序界面说明

1. 当您的 AMD 显卡安装完驱动程序后，您可以右键桌面空白处，点击“Radeon 设置”打开 AMD 显卡设置界面。

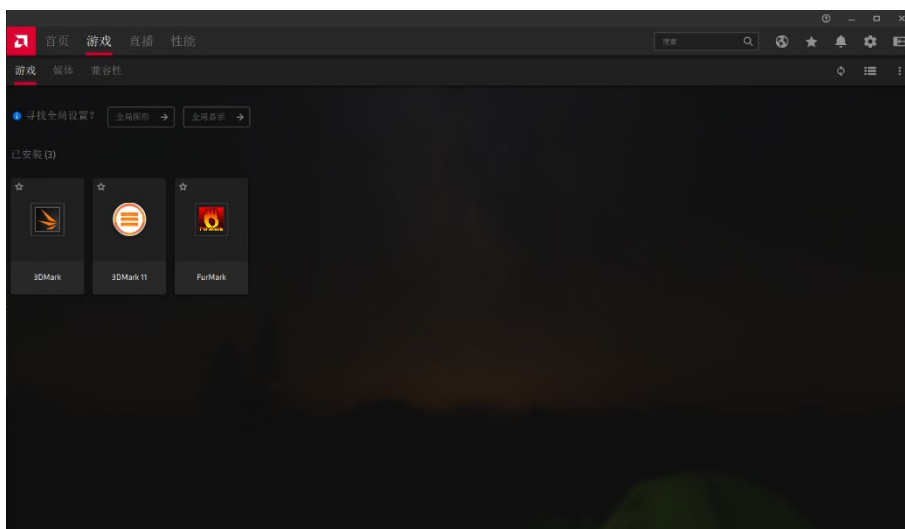




2. 点击设置小图标，可以进入设置相关内容，对“系统”、“显卡”、“显示器”等内容进行调整。



3. 点击“游戏”，可以对指定程序进行相关设置，也可进行全局设置。



---

# 1. Introduction

## 1.1. Foreword

Thank you for choosing SOYO graphics card. The SOYO graphics card you choose is made of NVIDIA™ / AMD high-performance 3D processor chip. The graphics card combines high-quality video play, high-quality 3D rendering quality, and provides better display and 3D processing effects. This graphics card uses high-quality heat sinks and powerful fans, which can reduce the heat generated by the graphics card during high-speed computing, thereby ensuring that the graphics card works at room temperature to improve the stability of the system. This graphics card is suitable for multimedia applications, 3D games and professional design, bringing high-performance 3D effects to the mainstream PC. Provide better solution for PC users and professional users, is a full range of ultra-high-quality 2D / 3D graphics card.

## 1.2. Product packaging

When you get a complete set of SOYO graphics card, the following accessories should be included in the box:

- A SOYO graphics card
- A quick installation manual (some models only)
- A warranty card
- Others

## 1.3. Driver

Please get the latest driver from SOYO official website, NVIDIA official website or AMD official website, subject to the information on the website.

## 1.4. Graphics system requirements

- CPU: Pentium 4, Celeron, AMD Athlon / Sempron or above compatible processor
- Motherboard: PCI-E graphics card requires PCI-Express x16 graphics interface motherboard
- Memory: DDR2 / DDR3 / DDR4 memory (2GB or above)
- Monitor: 17-inch or above monitor
- Operating system: Windows 7/10, 64-bit (some models only support windows

10 1809 and above)

- Additional programs: .NET4.5, Adobe Reader, etc.

## 2. Graphics card installation

### Warning:

This graphics card is composed of many sophisticated integrated circuits and other components, which are easily damaged by static electricity. So please make the following preparations before installation:

1. Make sure the computer is off and power cable unplugged.
2. Make sure that the chassis has enough space to install your graphics card.
3. When handling the graphics card, try not to touch the metal wiring part. It is best to wear anti-static gloves.



PCI-Express x16 interface graphics card

(The pictures are for reference only, the specific graphics card appearance shall prevail)

### Attention:

1. If you do not have anti-static gloves when installing, please touch the conductive object to discharge the static electricity in your body first to ensure that your body does not carry static electricity during installation.
2. Do not let other parts of your body hurt the graphics card assembly.
3. If the graphics card is obviously damaged during use, please do not connect the power supply.

### 2.1. Uninstall existing graphics card

If you are installing a new machine, you can skip this step.

If you are installing an old machine, and the old machine has installed a discrete graphics card, you must uninstall the existing driver before installing the new graphics card.

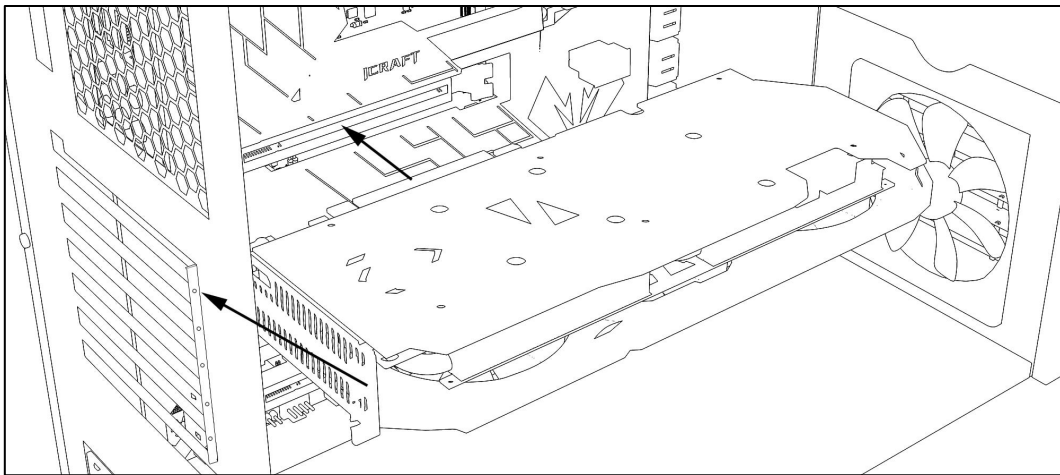
1. In the Windows operating system, right-click the "Start" button and select "Device Manager". Select your existing graphics card driver in the "Display Adapter" column, and then select "Uninstall Device".
2. Turn off the computer and disconnect the power, open the computer case, and remove the existing graphics card.

## 2.2. Installing the graphics card

1. Remove the chassis cover.
2. Remove the graphics card from the package.
3. Insert the graphics card into the PCI-Express x16 slot on the motherboard.

Proceed as follows:

- a) Find the PCI-Express x16 slot to be used, and remove the same number of expansion slot baffles as the metal baffle of the graphics card according to the slot position (if it has been removed, ignore this step);
- b) Carefully plug the graphics card into PCI-Express x16 slot;
- c) Fix the metal baffle of the graphics card and the expansion slot of the chassis with screws.



Schematic diagram of graphics card installation

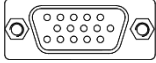
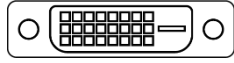
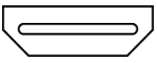
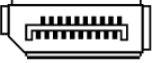
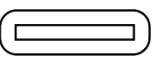
(The pictures are for reference only, specific operations are subject to actual conditions)

\*Please make sure that the PCI-E connector of the graphics card is in close contact with the PCI-Express x16 slot of the motherboard.

4. If the graphics card has a 6pin / 8pin external power interface, you need to plug the corresponding 6pin / 8pin power cable in the computer's power supply to the external power interface of the graphics card. (If the graphics card has multiple external power connectors, you need to connect them all)

5. Reinstall the casing of your machine, lock the screws, and connect the display device that supports VGA / DVI / HDMI / DP / Type-C interface transmission to the graphics card through the VGA / DVI / HDMI / DP / Type-C transmission cable. The corresponding interface of the graphics card (graphic card and display device must have corresponding interface, please see the figure below for interface description).
6. Reconnect other devices to the computer correctly (restore the original condition).
7. Reconnect the power cable and start the computer.

**Description of graphics card output interface:**

				
VGA	DVI	HDMI	DP	Type-C

Common graphics interface

## 3. Driver installation

### 3.1. SOYO official graphics driver download

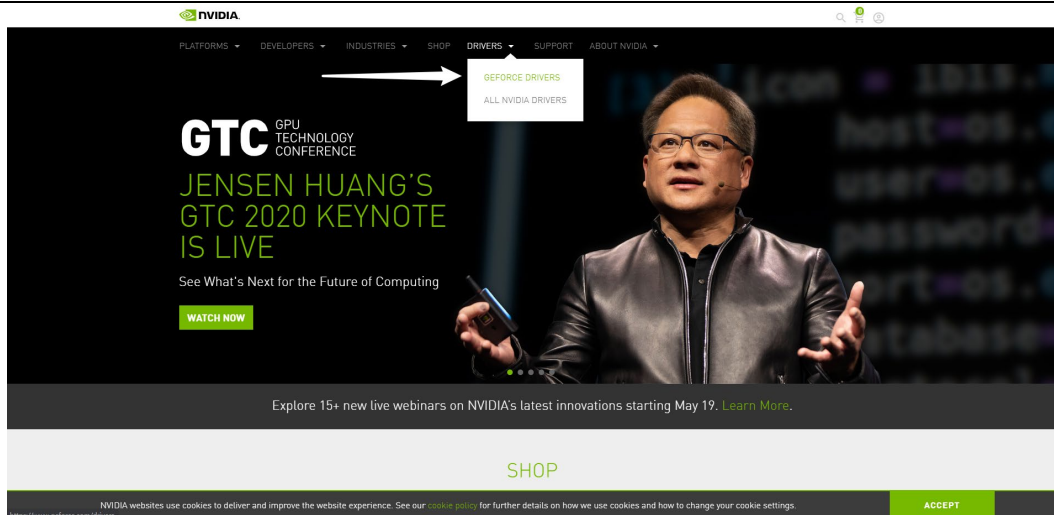
1. Open a web browser and visit <http://www.soyocn.net/>.
2. Click "下载中心"——"显卡驱动".



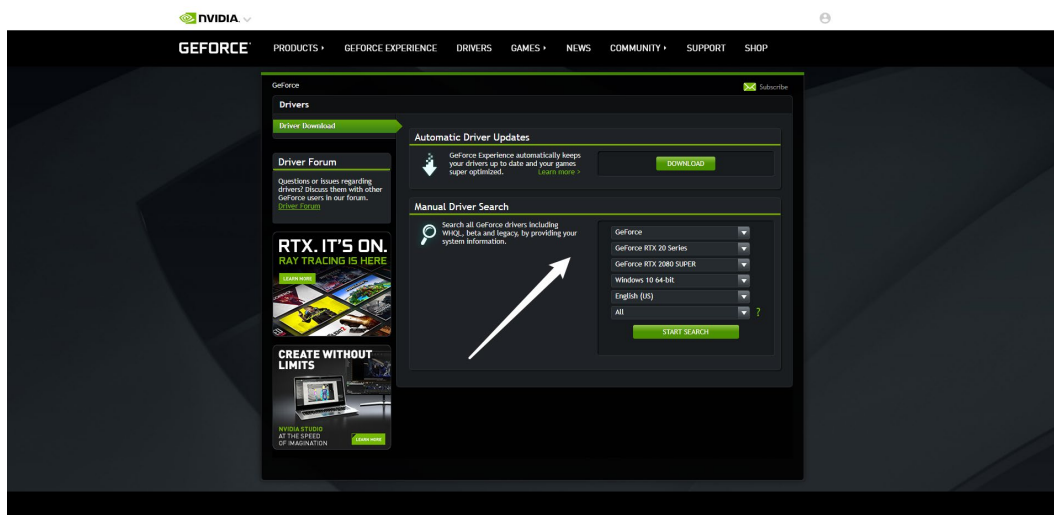
3. According to the type of graphics card, choose the graphics driver to choose NVIDIA series or AMD series.
4. Click to enter the graphics card download interface according to the graphics card model (if you do not find the graphics card model you purchased, you can go to the NVIDIA official website to download the corresponding driver).
5. Select the corresponding driver according to the computer system and click "DOWN" to download. Wait for the download to complete and install.

### 3.2. NVIDIA official website graphics card driver download

1. Open a browser and visit <https://www.nvidia.com/en-us/>
2. Click "DRIVERS" and select "GEFORCE DRIVERS" (recommended) or "All NVIDIA DRIVERS" to enter the driver download page. (The following tutorial uses "GEFORCE DRIVERS" as an example)



3. After the jump, select the language you want to install based on the graphics card series, model, and your current computer system that you have selected at the "Manual Driver Search".

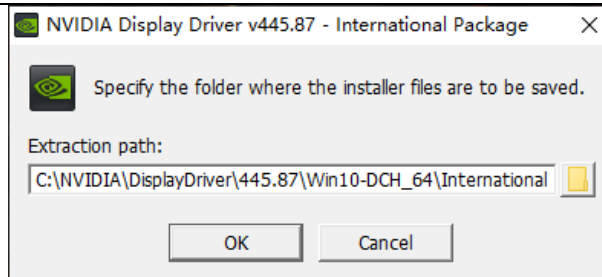


4. After confirming that the model is correct, click "START SEARCH".
5. Click the latest version of the graphics card driver to download, and wait for the download to complete before installing.

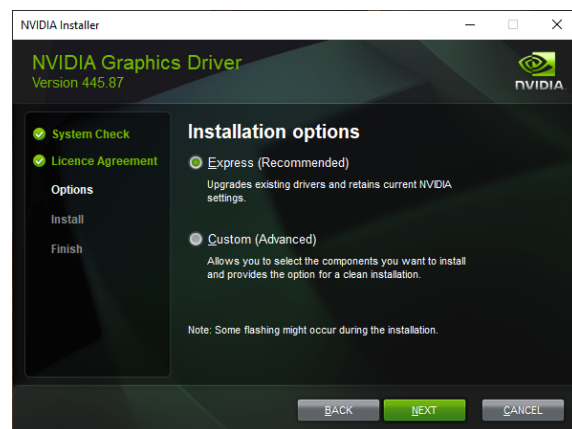
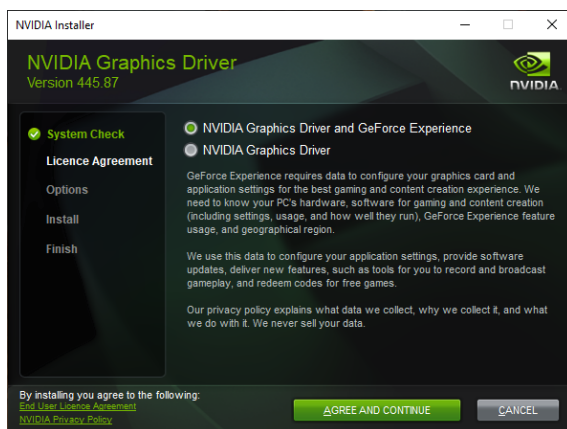
### 3.3. NVIDIA graphics card driver installation

1. After the driver download is complete, open the driver installation program. When the NVIDIA driver decompression interface appears, click the "OK" button. After the decompression is completed, the driver installation interface will pop up automatically.

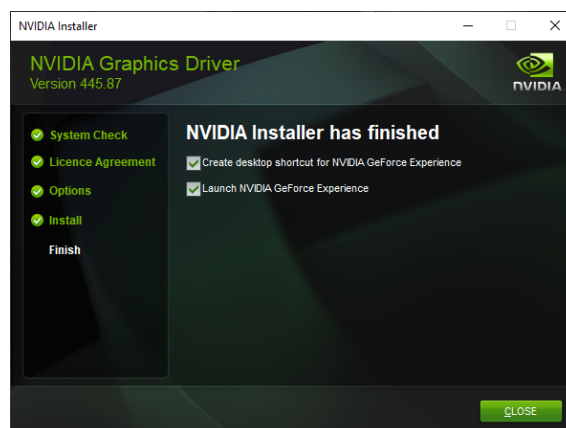




2. When the NVIDIA Software License Agreement window appears, click "AGREE AND CONTINUE", the following installation options will appear, you can choose "Express (Recommended)" installation or "Custom (Advanced)" installation, it is recommended to select "Express (Recommended)" Installation method and then click "NEXT" to install the driver.

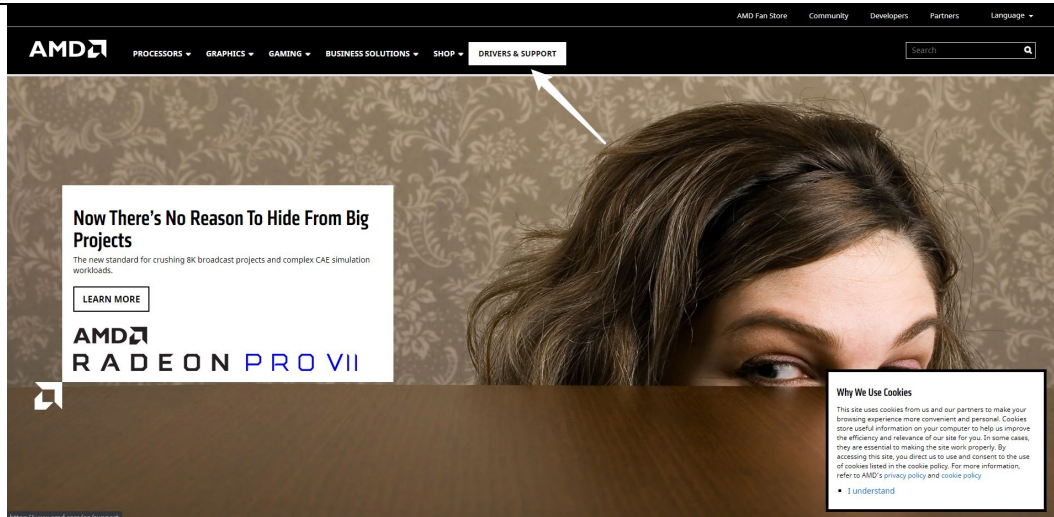


3. When the driver installation is completed, the installation program will appear the following interface, click "CLOSE" to exit the driver installation program. It is recommended to restart the system after the driver is installed to get the best experience.

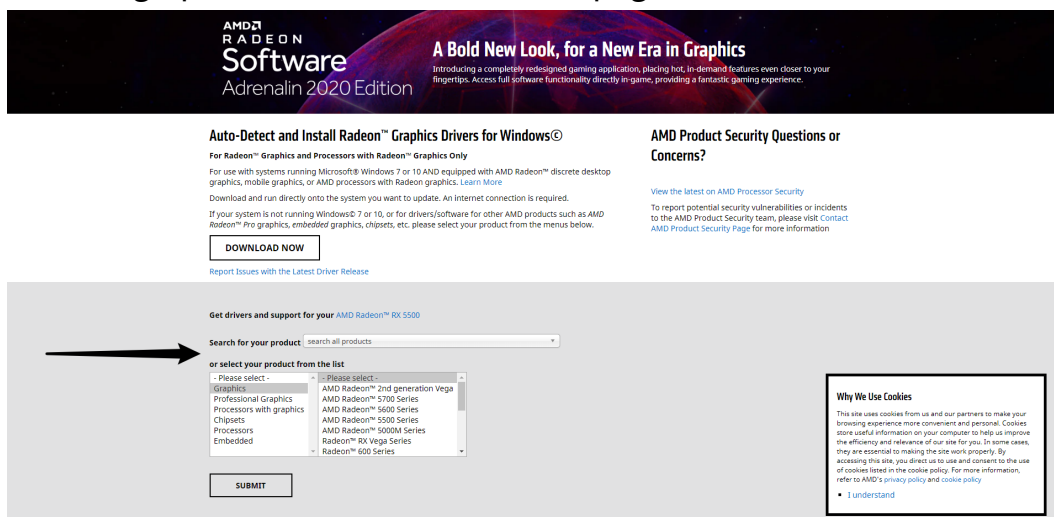


### 3.4. AMD official website graphics card driver download

1. Open a browser and visit <https://www.amd.com/en/>.
2. Click "DRIVERS & SUPPORT".



3. After the jump, at "Search for your product", search and select according to the graphics card model you purchased, or at "Select your product from the list", select the graphics card series and model you purchased. When finished, click "SUBMIT" to enter the graphics card driver download page.



4. Select your current operating system, click "DOWNLOAD" to download, and wait for the download to complete before installing.

### 3.5. AMD graphics card driver installation

1. After the driver download is complete, open the driver installation program. When the AMD graphics driver installation interface appears, click the "Install" button and wait for the installation to complete.
2. When you check the "AMD Gaming Evolved App" to install, you need to keep network connection during the installation process. If the network interruption, it will cause a long time unable to complete or the application installation fails. After the driver installation is over, there will be a prompt the situation. After ensuring

that other drivers are installed, the graphics card can be used normally. The "AMD Gaming Evolved App" program will not affect the normal use of the graphics card. Please select the installation on demand.

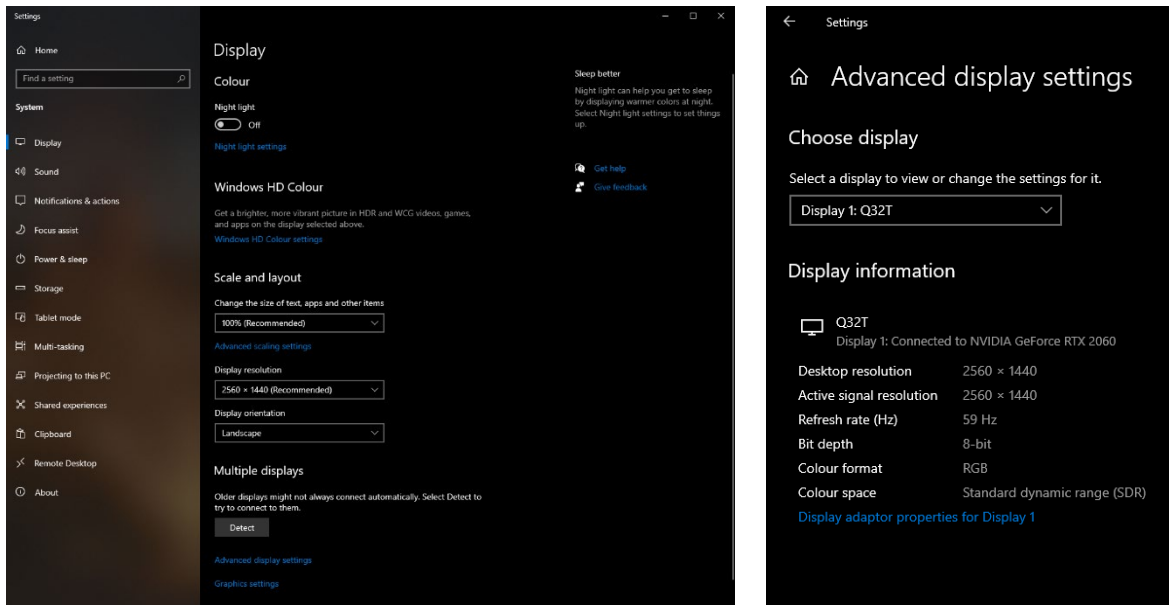
3. After the driver installation is completed, the system may pop up a suggestion to restart the system. It is recommended to restart the system after the driver installation is completed to obtain the best experience.

## 4. Display settings

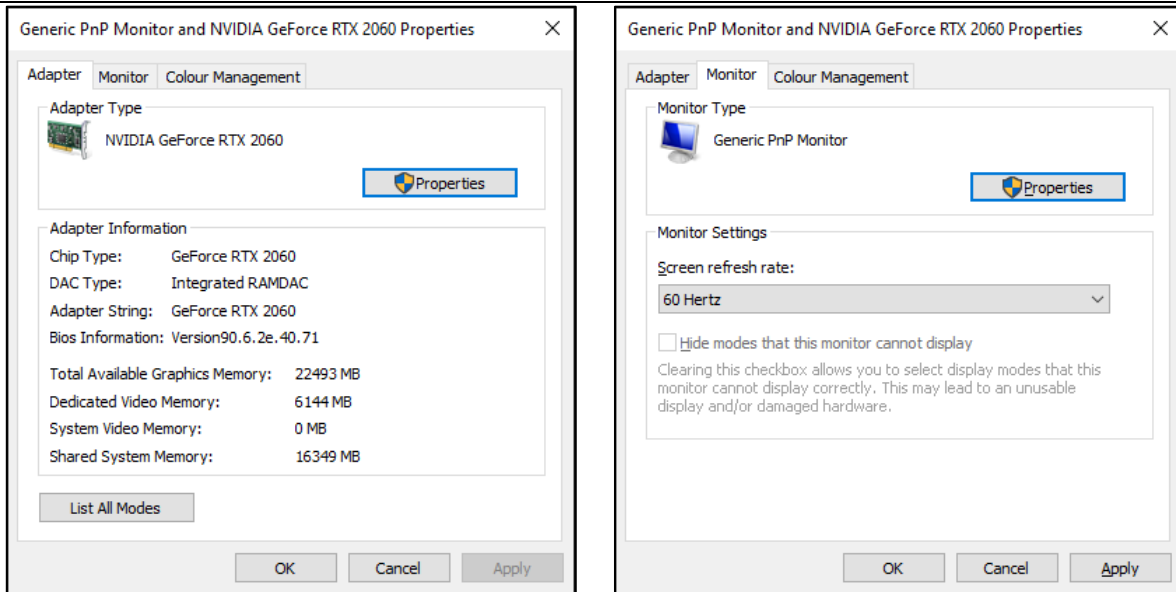
Note: The following graphics card property settings are all explained using Windows 10 in SOYO NVIDIA RTX 2060 / AMD RX580 as an example. The other system methods are similar, and this description will not be explained in detail.

### 4.1. System display setting adjustment

1. After the graphics card driver is installed, you can right-click a blank area on the desktop and select "Display settings" to open the system display settings interface. In this interface, you can view the currently used display resolution and display direction. You can change the display resolution, display direction, etc. on this interface. Click "Advanced display settings" at the bottom of the interface to open the advanced display settings, and you will see the information of the current display device.

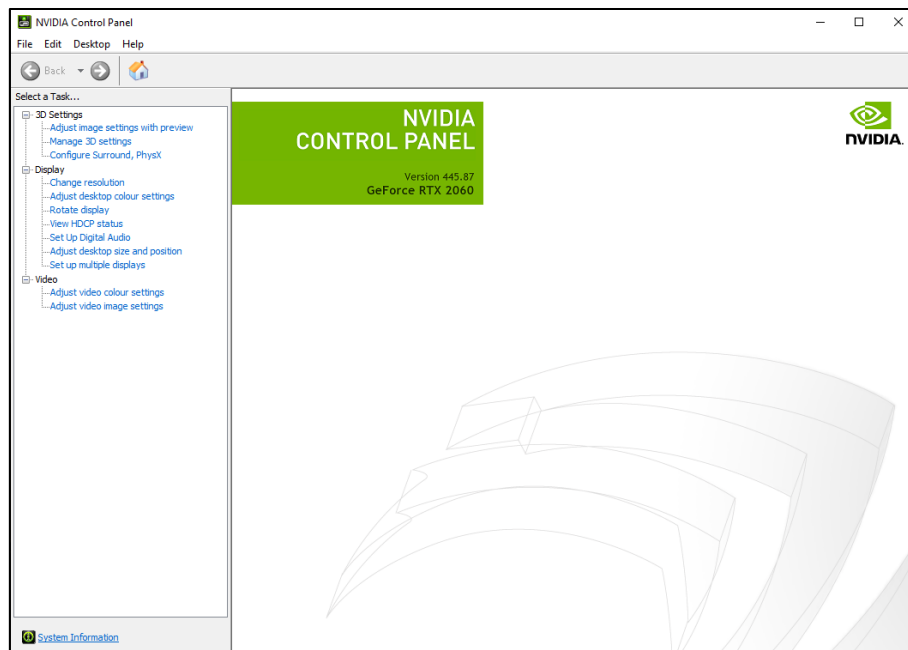


2. Click "Display adapter properties for Display 1" to enter the display device properties interface (if there are multiple displays, the actual one shall prevail). In the display device properties interface, you can view and change the "screen refresh rate".

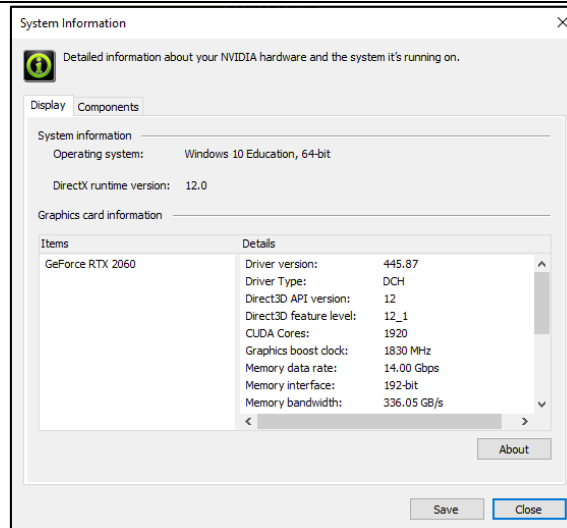


## 4.2. NVIDIA driver interface description

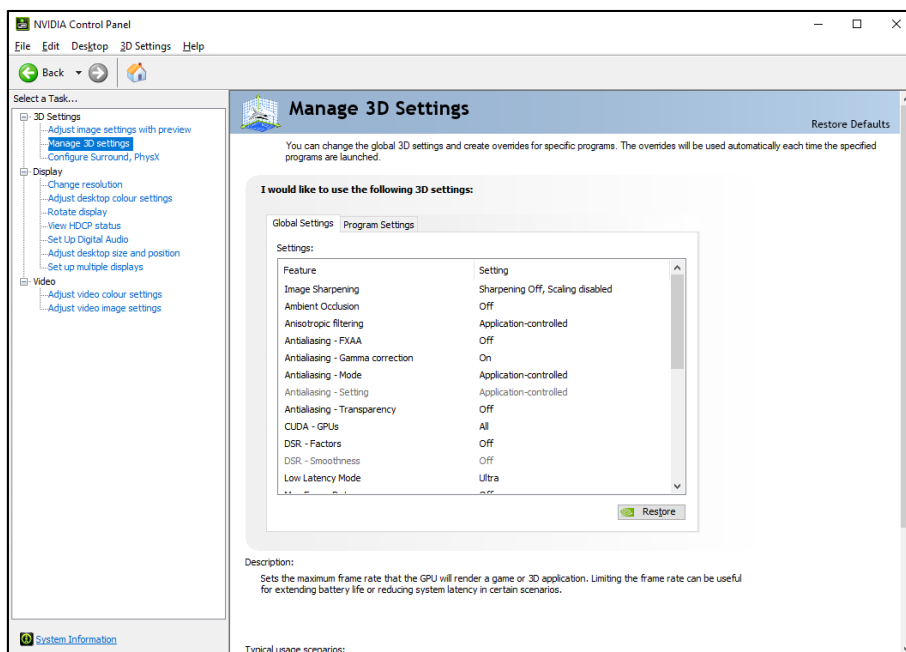
1. After installing the driver for your NVIDIA graphics card, you can right-click an empty space on the desktop and click "NVIDIA Control Panel" to open the NVIDIA Control Panel interface.



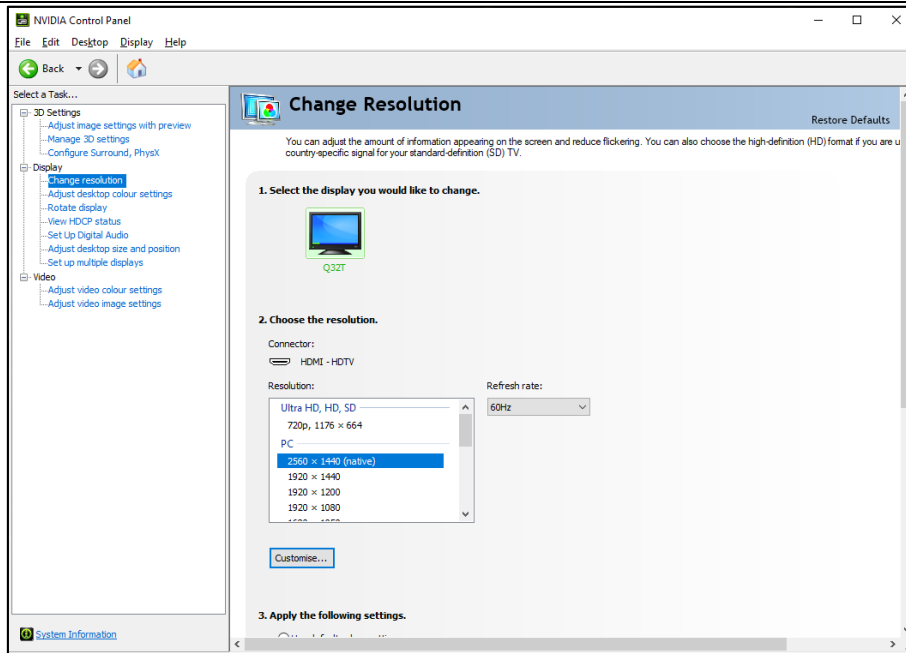
2. Click "System Information" in the lower left corner of the NVIDIA control panel to view information about the current graphics card.



3. Click "Manage 3D Settings" on the left side of the NVIDIA control panel to open the program 3D settings interface. This page can be used for global 3D settings or individual 3D settings by program.

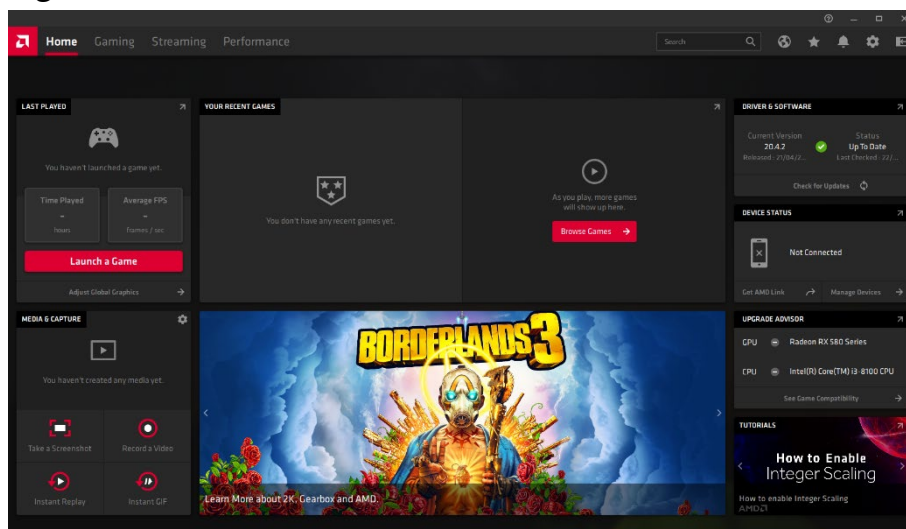


4. Click "Change resolution" on the right side of the NVIDIA control panel to open the monitor resolution setting interface, which can change the resolution and refresh rate.

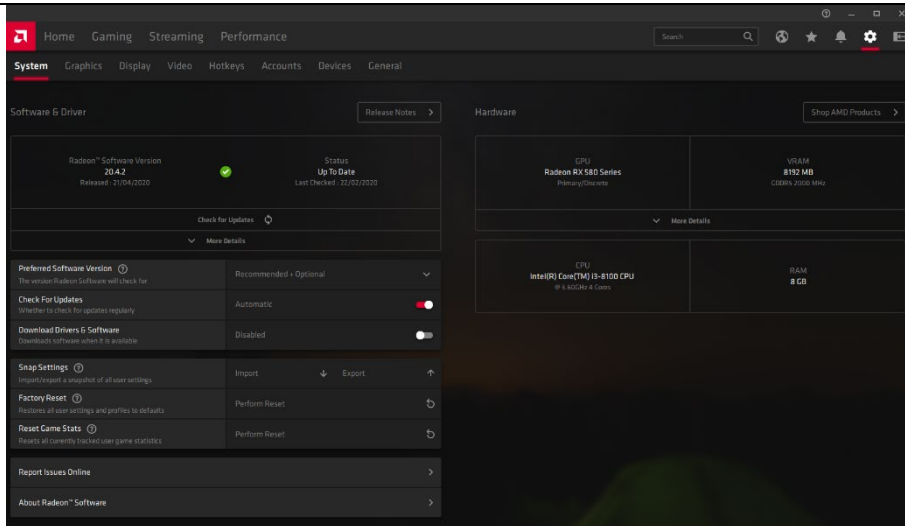


### 4.3. AMD driver interface description

1. After installing the driver for your AMD graphics card, you can right-click a blank space on the desktop and click "AMD Radeon Software" to open the AMD graphics card settings interface.



2. Click the small setting icon to enter the settings related content and adjust the contents of "System", "Graphics Card", "Monitor" and so on.



3. Click "Game", you can make related settings for the specified program, you can also make global settings.

